

Klipsch[®]

THX[®] ULTRA 2

B E H I N D T H E R A N G E



Klipsch[®]



PROFESSIONAL GRADE CINEMA SOUND **THX® CINEMA SERIES**

ONCE YOU HEAR IT, YOU'LL HAVE TO HAVE IT

Get cinema quality sound in the home. The Klipsch THX® Series delivers mind-blowing intensity, consciousness-altering realism and soul stirring magnificence.

You've never experienced home theatre sound so accurate, dynamic, detailed and immersive. This range is THX® Ultra2 Certified, to fill rooms of 3,000 cubic feet or larger.

Few professional theatres can match the stunning high output, low distortion sound that earned this system the highest THX® certification.

Klipsch has provided the professional cinema space with incredible audio for decades. From 15-speaker systems for small theatres to 40-speaker systems for 750 seat venues, we know how to fill every square inch of a space with extraordinarily intense and realistic sound.

With maximum installation reliability and unlimited flexibility, the Klipsch THX® Speakers are top of the line. These speakers expertly deliver the raw explosiveness and fine detail of any film format and will shatter your expectations for home theatre performance.



SHIPPING QUANTITY: SINGLE

PART NUMBER

1068690 (Left)

1068689 (Right)

THX SERIES

THX-6000-LCR DUAL 6.5" LCR SPEAKER

| | |
|------------------------------|--|
| FREQUENCY RANGE | 48Hz-20kHz ± 3dB |
| SENSITIVITY | 91 dB @ 2.83V / 1m |
| POWER HANDLING | 150 watts maximum continuous (600 watts peak) |
| IMPEDANCE | 8 Ohm Compatible |
| CROSSOVER FREQUENCY | 1400Hz |
| HIGH FREQUENCY DRIVER | 1" (2.5cm) magnetically shielded, titanium-dome compression driver with 9.6 oz ceramic magnet structure with a 10" x 6" rectangular 90°x 60° Tractrix Horn |
| LOW FREQUENCY DRIVER | Two 6.5" (16.5cm) magnetically shielded, Cerametallic cone, cast aluminium frame woofers |
| ENCLOSURE MATERIAL | Medium density fibreboard (MDF) |
| ENCLOSURE TYPE | Bass reflex via front-firing port |
| INPUTS | Two sets of binding post speaker terminals (connected via bass strap jumpers) |
| PRODUCT DIMENSIONS | 17" W x 15" H x 12.5" D (38.1cm H x 43.2cm W x 31.8cm D) |
| MOUNTING | 4-bolt pattern 1/4"-20 threaded inserts |
| PRODUCT WEIGHT | 39 lbs (17.7 kg) |
| SHIPPING WEIGHT | 45.5 lbs (20.6 kg) |
| FINISH | Galaxy Black cabinet with Black anodized aluminium fascia |

BEYOND YOUR EXPECTATIONS

The Klipsch THX-6000-LCR loudspeaker brings high-performance cinema knowledge to the comforts of home. As part of the THX family, this LCR reveals all the raw power and fine detail that the filmmakers originally intended.

These highly efficient, professional grade bookshelf speakers feature a sealed enclosure, top-of-the-line internal wiring, dual Cerametallic™ woofers and a titanium diaphragm compression driver coupled to a Tractrix® horn

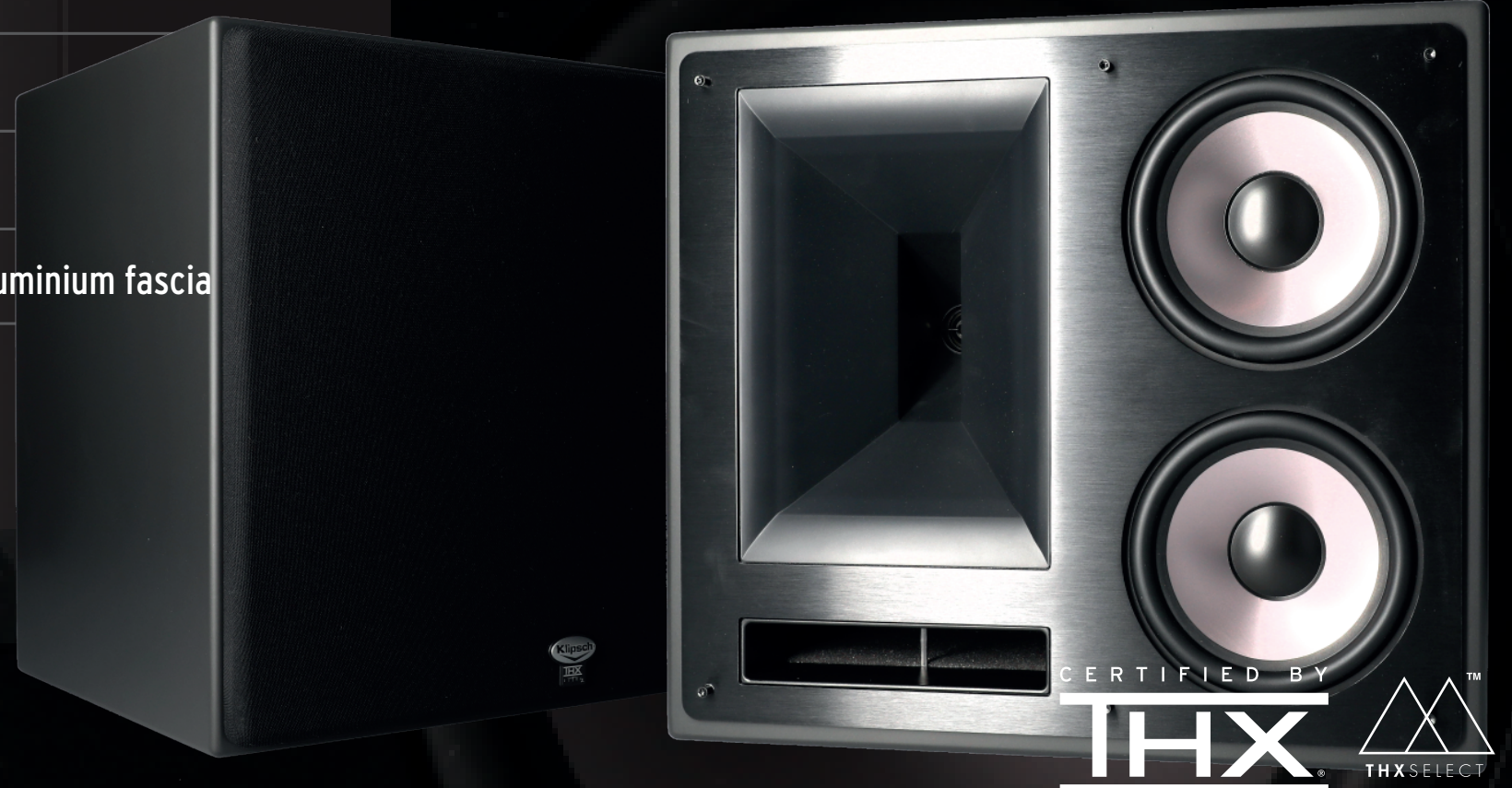
FEATURES

Front-firing port for low bass extension

6 x 10-inch Tractrix Horn Tweeter with 1-inch titanium-dome compression driver

Dual 6.5-inch Cerametallic woofers

Top-of-the-line internal wiring



CERTIFIED BY
THX
THX SELECT

SHIPPING QUANTITY: SINGLE

PART NUMBER

1068688

THX SERIES

THX-5000-LCR DUAL 5.5" LCR SPEAKER

| | |
|------------------------------|--|
| FREQUENCY RANGE | 80 Hz - 20 kHz +/- 3dB |
| SENSITIVITY | 94 dB @ 2.83V / 1m |
| POWER HANDLING | 100 watts maximum continuous (400 watts peak) |
| IMPEDANCE | 8 Ohm Compatible |
| CROSSOVER FREQUENCY | 1500Hz |
| HIGH FREQUENCY DRIVER | 1" (2.5cm) magnetically shielded, titanium-dome compression driver with 9.6 oz ceramic magnet structure with a 10" x 6" rectangular 90°x 60° Tractrix Horn |
| LOW FREQUENCY DRIVER | Two 5.25" (13.3cm) magnetically shielded, Cerametallic cone, cast aluminum frame woofers |
| ENCLOSURE MATERIAL | Medium density fibreboard (MDF) |
| ENCLOSURE TYPE | Bass reflex via front-firing port |
| INPUTS | Two sets of binding post speaker terminals (connected via bass strap jumpers) |
| PRODUCT DIMENSIONS | 17" W x 16" H x 12.5" D (32.4cm H x 40.6cm W x 31.8cm D) |
| MOUNTING | 4-bolt pattern 1/4"-20 threaded inserts |
| PRODUCT WEIGHT | 32 lbs (14.5kg) |
| SHIPPING WEIGHT | 45.5 lbs (20.6 kg) |
| FINISH | Galaxy Black cabinet with Black anodized aluminium fascia |

REALITY CHECK

The Klipsch THX-6000-LCR loudspeaker brings high-performance cinema knowledge to the comforts of home. As part of the THX family, this LCR reveals all the raw power and fine detail that the filmmakers originally intended.

These highly efficient, professional grade bookshelf speakers feature a sealed enclosure, top-of-the-line internal wiring, dual Cerametallic™ woofers and a titanium diaphragm compression driver coupled to a Tractrix® horn

FEATURES

Front-firing port for low bass extension

6 x 10-inch Tractrix Horn Tweeter with 1-inch titanium-dome compression driver

Dual 6.5-inch Cerametallic woofers

Top-of-the-line internal wiring



CERTIFIED BY
THX
THX SELECT

SHIPPING QUANTITY: PAIR

PART NUMBER

10686870

THX SERIES

THX-5000-SUR SURROUND SPEAKERS (PAIR)

| | |
|-----------------------------|--|
| FREQUENCY RANGE | 80Hz-20kHz \pm 3dB |
| SENSITIVITY | 96 dB @ 2.83V / 1m |
| POWER HANDLING | 100 watts maximum continuous (400 watts peak) |
| IMPEDANCE | 8 Ohm Compatible |
| CROSSOVER FREQUENCY | 2100Hz |
| TWEETER | Two 1" (2.5cm) magnetically shielded, titanium dome compression drivers with neodymium magnet structures |
| HIGH FREQUENCY HORN | 5" Square 90° x 60° Tractix® Horns |
| LOW FREQUENCY DRIVER | Two 5.25" (13.3cm) magnetically shielded, Cerametallic cone, cast aluminium frame drivers |
| ENCLOSURE MATERIAL | Medium density fibreboard (MDF) |
| ENCLOSURE TYPE | Sealed |
| INPUTS | Two sets of binding post speaker terminals (connected via bass strap jumpers) |
| PRODUCT DIMENSIONS | 13.75" H x 13" W x 8.5" D (35cm) H x 33cm W x 21.6cm D) |
| MOUNTING | 4-bolt pattern 1/4"-20 threaded inserts |
| PRODUCT WEIGHT | 20 lbs. (9.1kg) |
| SHIPPING WEIGHT | |
| FINISH | Galaxy Black cabinet with Black anodized aluminium fascia |

THEY'RE BEHIND YOU!

The THX-5000-SUR produces a smooth, seamless, broad distribution of sound by employing a pair of 5.25-inch Cerametallic™ woofers and dual 5-inch square Tractix® Horn tweeters in a Wide Dispersion Surround Technology array.

WDST is the industry's no-compromise approach to surround speaker design because it offers both rich, immersion surround sound and precise localization of individual effects from a speaker that has much more placement flexibility than conventional designs.

FEATURES

Front-firing port for low bass extension

6 x 10-inch Tractix Horn Tweeter with 1-inch titanium-dome compression driver

Dual 6.5-inch Cerametallic woofers

Top-of-the-line internal wiring



CERTIFIED BY
THX



SHIPPING QUANTITY: PAIR

PART NUMBER

10686870

THX SERIES

THX-8000-L IN-WALL SPEAKER

| | |
|------------------------------|---|
| FREQUENCY RANGE | 80Hz-23kHz +/- 3dB |
| SENSITIVITY | 91 dB @ 2.83V / 1m |
| POWER HANDLING | 100 watts maximum continuous (400 watts peak) |
| IMPEDANCE | 8 Ohm Compatible |
| CROSSOVER FREQUENCY | 2300Hz |
| HIGH FREQUENCY DRIVER | 1" (2.54cm) Titanium dome compression driver mated to 80° x 80° Tractrix Horn |
| LOW FREQUENCY DRIVER | 8" (20cm) Aluminium Cone Woofer |
| PRODUCT DIMENSIONS | 13.75" H x 13" W x 8.5" D (35cm) H x 33cm W x 21.6cm D) |
| MOUNTING DEPTH | 3.88" (9.85cm) |
| CUTOUT DIMENSIONS | 19.13" (48.59cm) H x 10.12" (25.7cm) W |
| PRODUCT WEIGHT | 17.5 lbs. (7.9kg) |
| SHIPPING WEIGHT | 19.9 lbs lbs. (9kg) |
| FINISH | Brushed Aluminium Facia / White paintable grille |

WATCH YOUR BACK!

Engineered to bring real cinema sound to the comforts of home without taking up valuable floor space, the THX-8000-L offers the ultimate performance in a hidden solution loudspeaker. It is designed for left, center or right channel use or wherever a monopole speaker is needed.

FEATURES

1" Titanium Dome Compression Driver mated to 80° x 80° Tractrix® Horn

8" Aluminium Woofer

THX® Ultra2 Certified Cinema Quality Sound

Maximum Installation Reliability

Unlimited Flexibility

Edge-to-Edge Grille



CERTIFIED BY

THX

THX

THXSELECT™

SHIPPING QUANTITY: PAIR

PART NUMBER

1068687)

THX SERIES

THX-8000-S IN-WALL SPEAKER

| | |
|------------------------------|---|
| FREQUENCY RANGE | 80Hz-23kHz +/- 3dB |
| SENSITIVITY | 90 dB @ 2.83V / 1m |
| POWER HANDLING | 100 watts maximum continuous (400 watts peak) |
| IMPEDANCE | 8 Ohm Compatible |
| CROSSOVER FREQUENCY | 2130Hz |
| HIGH FREQUENCY DRIVER | Two 1" (2.5cm) Titanium dome neodymium tweeters in a diffuse Tractrix® horn array |
| LOW FREQUENCY DRIVER | 8" (20cm) Aluminium Cone Woofer |
| PRODUCT DIMENSIONS | 20.8" (52.7cm) H x 11.8" (29.8cm) W |
| MOUNTING DEPTH | 3.88" (9.85cm) |
| CUTOUT DIMENSIONS | 19" (48.3cm) H x 10" (25.4cm) W |
| PRODUCT WEIGHT | 17.5 lbs. (7.9kg) |
| SHIPPING WEIGHT | 18.9 lbs. (8.57kg) |
| FINISH | Brushed Aluminium Facia / White paintable grille |

THEY'RE CREEPING UP BEHIND YOU!

In order to create enveloping sound fields and precise localization of individual effects, this speaker also utilizes Klipsch's Wide Dispersion Surround Technology. This no-compromise approach gives much more placement flexibility than conventional designs.

FEATURES

THX Ultra Certified in-wall surround speaker for rooms over 3000 cubic feet

Cinema quality sound in an architectural format

Fully enclosed back box

Wide Dispersion Sound Technology (WDST)

Flat, magnetic, paintable grille



CERTIFIED BY
THX



SHIPPING QUANTITY: SINGLE

PART NUMBER

1066128

THX SERIES

THX-502-L IN-WALL SPEAKER

| | |
|-----------------------------|---|
| FREQUENCY RANGE | 46 Hz - 20 kHz +/- 3dB |
| SENSITIVITY | 92 dB @ 2.83V / 1m |
| POWER HANDLING | 100 watts maximum continuous (400 watts peak) |
| IMPEDANCE | 8 Ohm Switchable |
| CROSSOVER FREQUENCY | 2100Hz & 1200Hz |
| HIGH FREQUENCY HORN | 1" (2.5cm) Titanium diaphragm compression driver mated to 90° x 90° square Tractrix® Horn |
| LOW FREQUENCY DRIVER | Dual 5.25" (13.3cm) high-output, fiberglass cone woofers |
| ENCLOSURE MATERIAL | MDF & Aluminum motorboard /ABS frame |
| ENCLOSURE TYPE | Infinite baffle, front flush with wall |
| CUTOUT DIMENSIONS | 16.42" (417.07mm) L X 6.57" (166.88mm) W |
| PRODUCT DIMENSIONS | 17.98" (459.69mm) H x 8.11" (205.99mm) W |
| MOUNTING DEPTH | 3.49" (88.65mm) |
| PRODUCT WEIGHT | 19.6lbs (4.4kg) |
| SHIPPING WEIGHT | |
| FINISH | Brushed Aluminium Facia / White paintable grille |

CONCEALED WEAPON

Engineered to bring real cinema sound to the comforts of home without taking up valuable floor space, the THX-502-L offers the ultimate performance in a hidden solution loudspeaker. It is designed for left, center or right channel use or wherever a monopole speaker is needed.

FEATURES

1" Titanium Dome Compression Driver mated to 80° x 80° Tractrix® Horn

8" Aluminium Woofer

THX® Ultra2 Certified Cinema Quality Sound

Maximum Installation Reliability

Unlimited Flexibility

Edge-to-Edge Grille



CERTIFIED BY
THX



SHIPPING QUANTITY: SINGLE

PART NUMBER

1066127

THX SERIES

THX-504-L IN-WALL SPEAKER

| | |
|-----------------------------|---|
| FREQUENCY RANGE | 46 Hz - 20 kHz +/- 3dB |
| SENSITIVITY | 92 dB @ 2.83V / 1m |
| POWER HANDLING | 150 watts maximum continuous (600 watts peak) |
| IMPEDANCE | 8 Ohm Compatible |
| CROSSOVER FREQUENCY | 250 Hz & 2100 Hz |
| HIGH FREQUENCY HORN | 1" (2.5cm) Titanium diaphragm compression driver mated to 90° x 90° square Tractrix® Horn |
| LOW FREQUENCY DRIVER | Four 5.25" (13.3cm) high-output, fibreglass cone woofers |
| ENCLOSURE MATERIAL | MDF & Aluminum motorboard /ABS frame |
| ENCLOSURE TYPE | Infinite baffle, front flush with wall |
| CUT OUT DIMENSIONS | 27.25" (69.2cm) H x 6.5" (16.5cm) W |
| PRODUCT DIMENSIONS | 28.88" (733.55mm) H x 8.13" (206.50mm) W |
| MOUNTING DEPTH | 3.52" (89.41mm) |
| PRODUCT WEIGHT | 18.3lbs (8.3kg) |
| SHIPPING WEIGHT | |
| FINISH | Brushed Aluminum Facia / White paintable grille |

THX® SELECT2 CERTIFIED

Delivers effortless dynamic range and brings superior sound to larger areas thanks to its highly regarded THX Select2 certification. It not only delivers consistent compelling audio to larger-sized rooms it also brings real cinema sound to the comforts of home without taking up any floor space.

FEATURES

1" Titanium Diaphragm Compression Driver mated to a 90° x 90° square Tractrix® Horn

Four 5.25" Fibreglass Cone Woofers

THX® Select 2 Certified

Cinema Quality Sound

Maximum Installation Reliability

Unlimited Flexibility

Edge-to-Edge Grilles



CERTIFIED BY

THX



SHIPPING QUANTITY: SINGLE

PART NUMBER

1066119

THX SERIES

THX-5002-L IN-CEILING SPEAKER

| | |
|-----------------------------|--|
| FREQUENCY RANGE | 45Hz-20kHz+/-3dB |
| SENSITIVITY | 93dB @ 2.83V / 1m |
| POWER HANDLING | 100 watts maximum continuous (400 watts peak) |
| IMPEDANCE | 8 Ohm Compatible |
| CROSSOVER FREQUENCY | 1200 Hz & 1800 Hz |
| HIGH FREQUENCY HORN | 1" (2.5cm) Titanium tweeter in a 7.5 x 3.75" 60-90-110 VCT 45° Skewed horn |
| LOW FREQUENCY DRIVER | Two 5.25" Cerametallic Woofers |
| ENCLOSURE TYPE | Fully enclosed back box |
| CUT OUT DIMENSIONS | ø 13.39" (34.01cm) |
| PRODUCT DIMENSIONS | ø 15.25" (38.7cm) |
| MOUNTING DEPTH | 9.5" (24.1cm) |
| PRODUCT WEIGHT | 18.3lbs (8.3kg) |
| SHIPPING WEIGHT | 12 lbs (5.4kg) |
| FINISH | Brushed Aluminium Facia / White paintable grille |

SIGNATURE THX QUALITY IN-CEILING SOUND

Timbre matched to all of our THX-certified products, so you can mix and match to create an unbeatable, discreet stereo or home theater system that's just right for you.

Armed with explosive dynamics that won't disrupt your home's decor, the Klipsch THX® Ultra2-certified in-ceiling speaker creates realistic audio experiences that rival those found in large movie theaters and concert halls.

FEATURES

1" Titanium Tweeter

Dual 5.25" Cerametallic Woofers

THX® Ultra2 Certified / Cinema Quality Sound

Maximum Installation Reliability

Unlimited Flexibility

Edge-to-Edge Grille



SHIPPING QUANTITY: SINGLE

PART NUMBER

1066125

THX SERIES

THX-5002-S IN-CEILING SPEAKER

| | |
|-----------------------------|--|
| FREQUENCY RANGE | 45Hz-20kHz+/-3dB |
| SENSITIVITY | 93zz dB @ 2.83V / 1m |
| POWER HANDLING | 100 watts maximum continuous (400 watts peak) |
| IMPEDANCE | 8 Ohm Compatible |
| CROSSOVER FREQUENCY | 1200 Hz & 1800 Hz |
| HIGH FREQUENCY HORN | 1" (2.5cm) Titanium tweeter in a 7.5 x 3.75" 60-90-110 VCT 45° Skewed horn |
| LOW FREQUENCY DRIVER | Two 5.25" Cerametallic Woofers |
| ENCLOSURE TYPE | Fully enclosed back box |
| CUT OUT DIMENSIONS | ∅ 13.39" (34.01cm) |
| PRODUCT DIMENSIONS | ∅ 15.25" (38.7cm) |
| MOUNTING DEPTH | 9.5" (24.1cm) |
| PRODUCT WEIGHT | 18.3lbs (8.3kg) |
| SHIPPING WEIGHT | 12 lbs (5.4kg) |
| FINISH | Brushed Aluminium Facia / White paintable grille |

TRAILBLAZING CEILING SOUND

So stunningly detailed and immersive, the THX-5002-S in-ceiling surround speaker brings a whole new dimension of reality to home theatre.

Perhaps that's why it's the first of its kind to receive the highly respected Ultra2 certification from THX.

FEATURES

Dual 1" Titanium tweeters

Dual 5.25" Cerametallic Woofers

THX® Ultra2 Certified / Cinema Quality Sound

Maximum Installation Reliability

Unlimited Flexibility

Edge-to-Edge Grille



THX CERTIFIED BY
THX

THX SELECT™

SHIPPING QUANTITY:SINGLE

PART NUMBER

221200080011 (120V)

THX SERIES

KA-1000-THX AMPLIFIER

| | |
|---------------------------|--|
| FREQUENCY RANGE | 20 Hz - 1 kHz +/- 3dB |
| AMPLIFIER | High-Efficiency Class D |
| POWER HANDLING | FTC Rated Power: 500W into 8 ohms, 1000W into 4 ohms, 20Hz-1kHz @ <1.5% THD Dynamic Power: 2050W into 8 ohms, 3025W into 4 ohms @ 5% THD |
| AUTO POWER ON | 2 second ON delay, 15 minute off delay |
| LOW PASS CROSSOVER | Continuously variable from 40Hz-120Hz, 24dB / octave slope above 120z (non-THX mode) |
| INPUTS | 2 Gold-plated RCA phono jacks |
| OUTPUTS | 2 Gold-plated RCA phono jacks (unfiltered) 2 Speakon® NL2 jacks |
| PRODUCT DIMENSIONS | 4.75" (12.1cm) H x 17.5" (44.5cm) W x 12.25" (31.1cm) D |
| VOLTAGE | 110/120 VAC 60Hz |
| EXPORT VOLTAGE | 230 VAC 50/60Hz |
| FEATURES | THX On/Off Boundary Gain Compensation On/Off |
| SHIPPING WEIGHT | 12 lbs (5.4kg) |

This full-featured Class D amplifier, which can be conveniently located near the rest of the installation's electronics, has a built-in, defeatable, low-pass crossover and level control, boundary-gain compensation switch, completely variable phase control, and an auto power function.

This high-performance amplifier has a massive toroidal power supply that is capable of delivering 1000-watts into a 4 ohm load.

It can also support two high performance subwoofers and has a left and right RCA pass-through.

The KA-1000-THX delivers a combination of flexibility, reliability and sound quality that is unmatched.

BE STILL OUR BEATING HEARTS

The KA-1000-THX subwoofer amplifier is the powerful driving force behind the Klipsch THX® Ultra2 system.

This model offers rock-solid dependability under the most demanding conditions and allows listeners to experience all the power, detail and emotion of their favorite music and movies.

FEATURES

Delivers 1000-watts into a 4 ohm load

Can support two high performance subwoofers

Black machined aluminium front panel and knobs

500 watts continuous into 8 ohms or 1,000 watts continuous into 4 ohms

Crossover bypass switch

Selectable signal-sensing auto-on/off circuit

NL2 SpeakOn amplifier output jacks



CERTIFIED BY
THX



SHIPPING QUANTITY:SINGLE

PART NUMBER

1068691

THX SERIES

THX-1200-SW 12" PASSIVE SUBWOOFER

| | |
|-----------------------------|---|
| FREQUENCY RESPONSE | 20 Hz - 200 Hz +/- 3dB |
| MAX ACOUSTIC OUTPUT | 130dB @ 30Hz, 122dB @ 20Hz, 112dB@ 15Hz 1/8 space, 1 meter (2 enclosures side-by-side per THX Ultra2) |
| AMPLIFIER | Use only with KA-1000-THX |
| IMPEDANCE | 8 Ohms Compatible |
| LOW FREQUENCY DRIVER | 12" (30.5cm) front-firing, Cerametallic cone, cast aluminium frame drivers with a 240oz ceramic magnet structure |
| ENCLOSURE MATERIAL | Medium density fibreboard (MDF) |
| ENCLOSURE TYPE | Bass reflex via front-firing port |
| INPUTS | 1 Speakon NL2 jack and included cable |
| VOLTAGE | 110/120 VAC 60Hz |
| EXPORT VOLTAGE | 230 VAC 50/60Hz |
| PRODUCT DIMENSIONS | 20.25" (51.4cm) H x 17.75" (45.1cm) W x 17.75" (31.8cm) D |
| FINISH | Galaxy Black cabinet with Black anodized aluminium fascia |
| WEIGHT | 80 lbs (36.3kg) |
| SHIPPING WEIGHT | 80 lbs (36.3kg) |

To achieve intense, deep-bass output in large rooms, this high-performance subwoofer that is part of the THX® family features a 12-inch, long-throw Cerametallic™ driver and front-firing port.

It includes a 15 pound motor structure and a 20-foot Monster® THX Ultra cable with Neutrik Speakon® connectors.

The subwoofer is driven by an external 1-kilowatt amplifier (KA-1000-THX) tailored to its characteristics for maximum output and reliability with extremely low distortion.

ITS ALL ABOUT THAT BASS

The world's finest theatre operators choose Klipsch cinema systems because they deliver the full impact of the most intense action movie soundtracks without sacrificing musical definition.

When designing the THX-1200-SW subwoofer, Klipsch applied its theater experience to bring the same powerful, deep-driving bass to the comforts of home.

FEATURES

12-inch, long-throw Cerametallic™ driver

Front-firing port

Top-of-the-line internal wiring



CERTIFIED BY
THX

