

a sound relationship
Russound

Wi-Fi Streaming

Just Got A Pro Upgrade



How to Chromecast using MBX-PRE and MBX-AMP



USING CHROMECAST

High resolution audio streaming from Pandora, Spotify, Google Play Music, Rhapsody, Napster, iHeart Radio, Tidal, Slacker, Deezer SoundCloud, YouTube Music, and Amazon Music (Android devices) among others.



To use these services, simply start one of these apps on your device, select the music you want to play and then hit the Chromecast icon (some services use a speaker icon, exact icon varies by service) to view a list of available devices for you to choose.

BENEFITS OF CHROMECAST

HIGHER QUALITY STREAMING – Chromecast can stream at up to 24-bit/96 kHz depending on the streaming service being used.

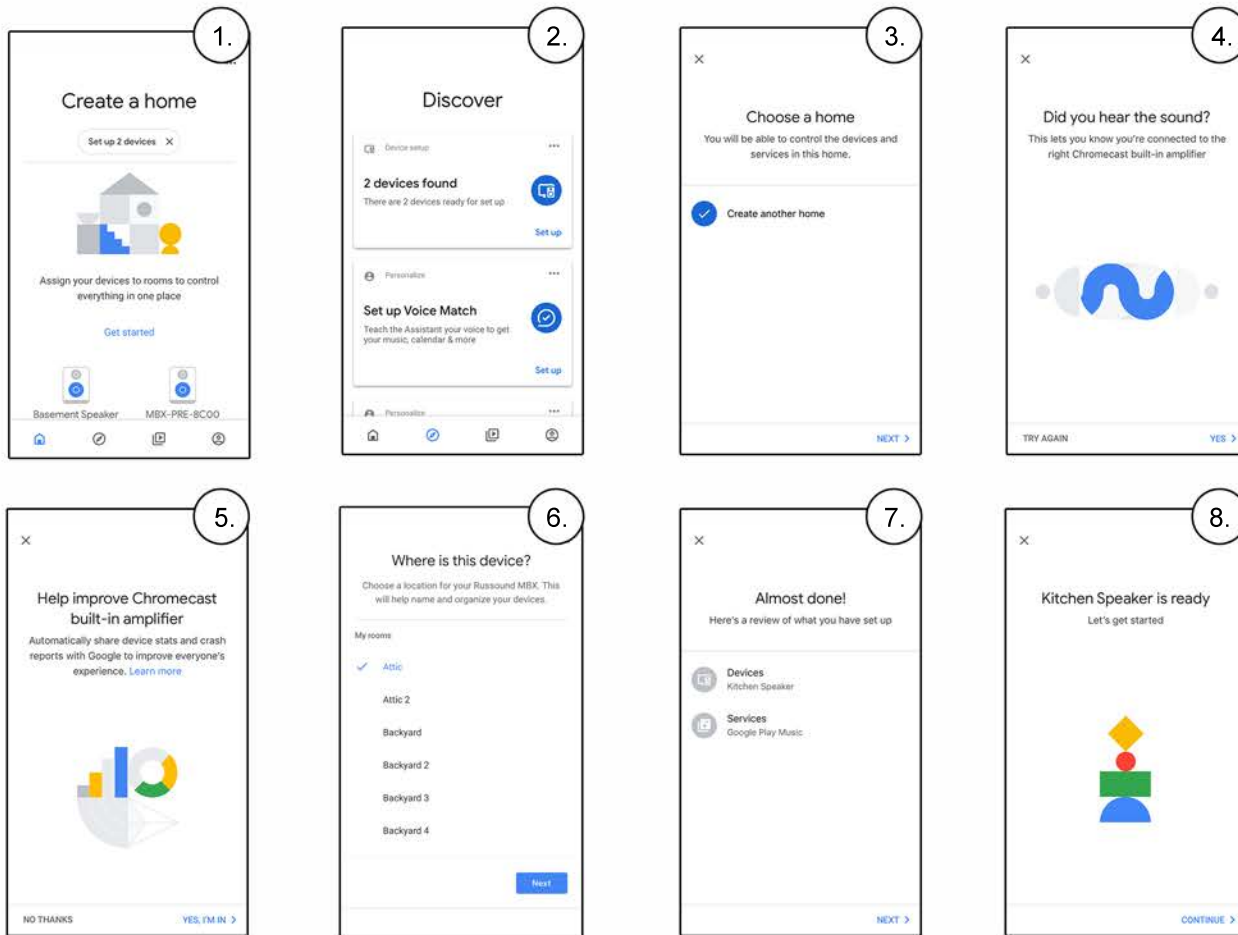
PHONE/TABLET NOT NEEDED TO MAINTAIN STREAMING – Once the streaming starts on your MBX product, the stream is handled by the MBX, not by your phone/tablet. You are free to make calls, text, or do anything else with your phone.

EASY ROOM GROUPING – You can use the Google Home app to create groups with your favorite rooms, or with areas of your home. Any group you create is instantly available to select from any Chromecast app. Grouping couldn't be easier.

Protected against Internet sales with
Russound's RCI Installer Program

How to Chromecast using MBX-PRE and MBX-AMP

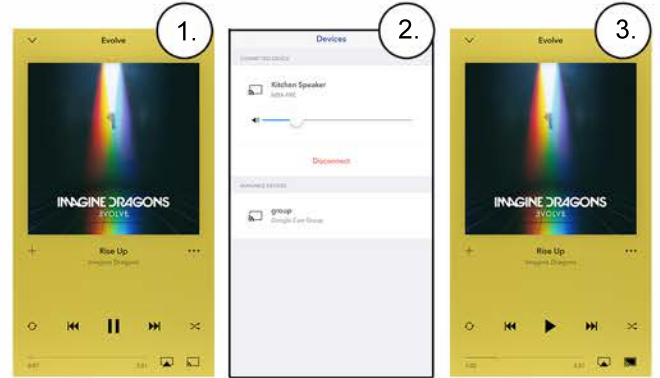
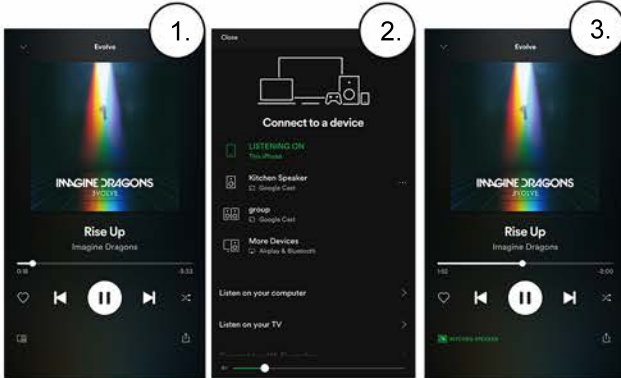
Connecting Google Home to MBX



Make sure you have the Google Home app already downloaded as it's required for the following steps:

1. Open Google Home and select the compass icon at the bottom for "Discover" to find devices.
2. The first section is titled "Device setup" click "Set up" in blue at the bottom left of that section.
3. Either use an existing home or create another home and hit next. Click on your MBX device then hit next.
4. Your MBX device should now be connected to your Google Home app. You will hear a tone if the MBX is plugged into speakers. Hit Next.
5. A screen will come up asking to share device stats and crash reports with google. You can choose either.
6. Choose where the device is located. If you are installing an MBX-PRE as part of a multi-room audio network, scroll to the end of the list and you'll see an option to use a custom name. In that space identify the PRE as Streamer 1 or 2 (or something else) to designate the PRE as a Global device.
7. If setting up wirelessly complete "Connect to Wi-Fi" by choosing your network. If not hit Next and a review of what you have set up should appear.
8. A screen will appear saying that your device is now ready.

How to Chromecast using MBX-PRE and MBX-AMP



Open the Spotify app on your mobile device and choose a song or playlist that you want to play.

Open the Pandora app on your mobile device and choose a song or playlist that you want to play.

1. On the bottom left, hit the icon that looks like a speaker in front of a computer monitor.
2. Find your speaker/group you want to play from. Hit the three dot icon to the right of it and choose "Google Cast".
3. Go back to the song and the icon at the bottom left should now show the green Chromecast logo and tell you where it is connected to.

1. Click the chromecast button on the bottom right.
2. Choose where to play the music.
3. Chromecast logo will turn white and the bars will move as it connects. Once connected, the logo will be filled in black.

Adding Voice Control

Voice Control requires a Google Home or a device that has Google voice assist enabled

1. Open the Google Home App and click "Add" at the top of the screen.
2. Choose "Create speaker group" and select the devices you want in this group. This includes MBX and Google devices like Google Home to use for voice control.



Hey Google, what song is playing in the Family Room?

