



T H E G R Y P H O N P R E A M P L I F I E R

O W N E R ' S M A N U A L X T

The Gryphon team would like to take this opportunity to congratulate and thank you for purchasing the Gryphon Preamplifier XT. To ensure optimum performance and maximum satisfaction, please read the owner's manual before proceeding to listen to your latest acquisition. As designers, audiophiles and music enthusiasts, we are well aware that most manuals are re-read in the first heated moments of actually listening to the equipment, but we do advise you to read this manual carefully before installing the Gryphon Preamplifier XT.

The Gryphon Preamplifier XT is a »prestige product« in the only meaningful sense of the term: a handmade product in very limited numbers based on the extensive research and development efforts of professional audio engineers, a component expert, a mechanical engineer and a designer. The Gryphon Preamp is the end result of three years of constant experimentation and investigation into the behavior of audio circuits under »real world« conditions. It is our intention to offer to the serious music lover a true state of the art system control amplifier which will extract the full measure of musical satisfaction from whatever source is used.

Working for our own pleasure as much as for anything else, we have challenged ourselves to push back the borders of audio component performance in a series of no-compromise, cost-no-object designs. The Gryphon Preamplifier XT is the latest realization of these goals and stands proudly alongside the Gryphon Headamp and the Gryphon Phonostage.

THE GRYPHON

Myth: Creature which combines the power of the »King of Beasts" with the grace of the »King of Birds". Known in Greek mythology as the guardian of the source of gold and protector of the Dionysian cup of infinite wealth.

Reality: Danish audio engineering company employing cutting edge technology and common sense in the pursuit of musical excellence.

GRYPHON PREAMPLIFIER XT

FEATURES

- Dual mono configuration
- 24-position passive resistor volume control
- Fully discrete construction
- Select premium-grade components
- Short signal-path with no internal wiring
- 28,000 microFarad capacitor bank
- Flat megabandwidth frequency response
- Zero negative feedback
- Pure Class A mode x 40
- Custom-built C-core transformer
- Low output impedance for long cable runs
- DC coupling with servo-control
- Independent, regulated power supplies with noise filters
- Modular mainframe design
- Non-magnetic chassis
- PCB-mounted WBT phono sockets
- Eleven-stage voltage regulation per channel
- Five year warranty

MUSICAL OBJECTIVES

Let us make one thing perfectly clear:

The sound of live music must be the ultimate reference in the design of any audio playback system.

Of course, there is an endangered species of »techno-freaks« who seriously maintain that the concert hall experience is irrelevant to the hi-fi experience. The techno-freak finds live music in real space duller than the thrill of hi-fi, lacking the »ultra sharp focus « on instruments. The predominance of reflected sound in the concert hall also takes the »edge« of live music for the techno-freak.

The sole purpose of every Gryphon product is to recreate as accurate an illusion of the live music experience as is humanly possible. We are successful only if our endeavors move you not to say »What a wonderful amplifier«, but to say instead, »What marvelous music«.

THE GRYPHON CREW

The exterior design, ergonomics and basic philosophy behind every Gryphon project are the brainchild of Gryphon founder Flemming E. Rasmussen.

More often than not, a full line of audio products is conceived and designed by a single person whose lack of overall expertise is revealed by the fact that a fine power amplifier is followed by a mediocre preamplifier or that the phono stage in an otherwise excellent preamplifier is not up to the same standard.

The Gryphon design team consists of two permanent members to ensure a consistent standard of performance, ergonomics and styling. They are assisted by a strong line-up of specialists who provide additional know-how and creativity for each individual project.

T H E G R Y P H O N D E S I G N G O A L S

One immediately obvious aspect of Gryphon products is the dual mono concept which is carried to its ultimate extreme in the topology of every Gryphon design in order to achieve minimal crosstalk, maximum channel separation. The use of large, separate power supplies and multistage AC regulation and filtering are also Gryphon trademarks. Simplicity is the watchword in Gryphon circuit design, with painstaking attention to the layout of grounding paths. Even the earliest version of the Gryphon Head Amp in 1984 featured true star grounding. The presence of the MUTE function on the program selector switch is just one example of our deceptively simple approach to maintaining the shortest possible signal path.

What is left out in audio engineering is every bit as important as what is put in.

Too many audio engineers use large numbers of mediocre components in a vain effort to compensate for fundamental shortcomings in circuit design, resulting in overly-complex products with textbook specifications, yet mediocre sound quality.

Equally irrelevant to the quest for realistic home music reproduction is the school of thought which subscribes to the indiscriminate use of only the »best« and most »fashionable« components, »dream caps«, »superresistors«, etc. This approach guarantees nothing but a very high price.

The Gryphon design team employs premium grade components, some of which are very expensive, others of which are less well-known in consumer audio but held in high regard in the computer industry and other professional applications. Rather than view these components in isolation, the interface and synergy of every part of the whole is carefully scrutinized.

Because Gryphon products are designed with careful attention to the true relationship of measured performance to subjective sonic performance, the Gryphon Preamplifier XT is an ideal tool for the evaluation of other components.

EXTERIOR DESIGN

Even if beauty is only skin deep, we see no reason why a fine (and expensive) audio instrument should not be as pleasing to the eye as it is to the ear, so long as the visuals do not constitute an aesthetic dictatorship which compromises musical performance.

The Gryphon philosophy makes no allowance for convenience features such as remote control or digital displays so long as they cannot be executed without dire consequences for sonic performance.

In the Gryphon Preamplifier XT form follows function, reinforcing the basic principles of the Gryphon concept and reflecting the dual mono topology. Because form follows function, the thoughtfully laid out features of the Gryphon Preamp are largely self-explanatory, breaking down the barriers that are usually erected between technology and the consumer.

MANUFACTURE AND ASSEMBLY

The Gryphon Preamplifier XT is manufactured by a select team of specialists. The fully sealed printed circuit boards with three times the normal quantity of high purity copper are assembled by a supplier of precision medical equipment with strict standards of quality control and pre-inspection of components. Chassis parts are manufactured by a specialist chosen solely for the outstanding quality of workmanship. In every aspect of the Gryphon Preamp, from the acrylic cover to the spikes to the handmade knobs of precious Brazilian Venge wood, the same stringent standards of excellence apply. Final assembly and testing take place in the Gryphon laboratories. Our years of research and development experience give us the confidence to back our products with a five year guarantee.

UNPACKING THE GRYPHON PREAMPLIFIER XT

The line level or MM version includes:

- 1 Gryphon Preamplifier XT
- 1 power supply
- 2 power supply cords
- 1 pair of phono shorting plugs
- 4 spikes with coasters
- 1 pair of gloves

The MC version also includes:

- 10 MC impedance modules

Please keep the carton and all original packing materials for safe future transportation of your Gryphon Preamplifier XT.

PLACEMENT

Your system should be set up for the shortest possible cable lengths, although the extreme low output impedance of the Gryphon Preamplifier XT does make it suitable for long cable runs.

The Gryphon Preamplifier XT chassis consists entirely of non-magnetic materials. Our extensive research has shown that magnetic fields have a deleterious effect on the performance of audio circuitry, especially on Moving Coil and RIAA circuits which handle ultra-low level signals.

In order to optimize the outstanding signal-to-noise ratio of the Gryphon XT, it should be placed as far away as possible from strong magnetic fields (such as large transformers in power amplifiers, etc.).

Consequently, the MM/MC version of the Gryphon Preamplifier XT should NOT be placed on top of the power supply. In this case the power supply may only be placed to the right of the preamplifier (as seen from the front) or, preferably, with the greatest practical distance between transformers and the phono circuitry. Careful placement of the power supply and preamplifier will prevent hum and noise in unshielded cables which may be caused by the electromagnetic field generated by power supply transformers.

The line version of the preamplifier is less critical of placement.

We suggest that you experiment in order to find the position that works best in your environment.

The power supply includes a captive 1.2 meter connecting cable.

Generally, power cords should be kept away from signal interconnect cables and loudspeaker cables should not be wound in circles.

AC CONNECTION

The proper voltage for your Gryphon Preamplifier XT is factory pre-set. Ideally, you should use the same AC power source for the Gryphon Preamplifier XT and source components (turntable, tuner, CD player, etc.), except devices with large power consumption, such as power amplifiers.

All power supplies should ideally be connected symmetrically to the power source for identical polarity.

Experiment with reversing both power supply plugs to find the optimum position. Correct polarity will particularly affect the reproduction of the decay of transients, the depth of the soundstage and the ambience of the recording venue.

The power cord of the Gryphon Preamplifier XT is terminated with a three-pin plug. Connection to mains earth is strongly recommended to derive maximum benefit from the dual-stage AC filtering of the power supply.

See the section on »The Art of Grounding« for further advice.

CAUTION (MC version only)

Connect the Gryphon Preamplifier XT to an AC power source BEFORE connecting any components to the Gryphon Preamplifier XT. Because there are no relays in the MC module, allow three minutes for the Gryphon Preamplifier XT to stabilize.

The turntable should always be turned on before turning on the power amplifier.

Always turn the power amplifier off before turning off the preamplifier. (We recommend leaving the Gryphon Preamplifier XT on at all times).

When the preamplifier is not left permanently on, it should always be turned on before the power amplifier.

DUAL MONO DESIGN

The Gryphon Preamplifier XT is a pure dual-mono configuration with two independent power supplies and separate AC cords for total galvanic channel separation.

The Gryphon Preamplifier XT is, in fact, two completely autonomous mono preamplifiers.

Absolute dual-mono construction ensures minimal crosstalk and maximum channel separation, for improved stereo perspective, better focus and greater dynamic stability.

ZERO NEGATIVE FEEDBACK

The absence of feedback means the virtual elimination of SID and TIM distortion, for cleaner, faster transients and sweeter, purer high end response.

NO CAPASITORS IN THE SIGNAL PATH

The elimination of AC coupling capacitors and compensating capacitors in the signal path preserves signal purity with superior bass performance and more airy reproduction of fine detail.

PURE CLASSE A MODE x 40

The extremely high bias current means that the Gryphon Preamplifier XT uses a mere fraction of its capacity for even the most demanding signal. Gryphon Preamplifier XT literally »coasts« along, well within its wide operating range with an ease which can be heard as smoother, more coherent reproduction, without grain or suppression of dynamics.

DISCRETE CONSTRUCTION, PREMIUM GRADE COMPONENTS

Integrated circuits may well be both practical and economical in mass-market applications, but when it comes to ultimate transparency and sonic purity in music reproduction, there is no substitute for discrete components judiciously deployed in the simplest possible circuit layout.

One of the major strengths of the Gryphon design team is our wide experience in fields outside consumer audio. We have drawn on this experience in the selection of components which are less well-known in hi-fi but held in high regard in the computer industry and other professional applications.

The selection of components in the Gryphon Preamplifier XT is based solely on sonic performance with no concern for tradition, size or cost.

TWO SEPARATE POWER SUPPLIES

In order to fully exploit the advantages of the dual-mono concept, the Gryphon Preamplifier XT employs completely independent power supplies with DC conditioning, dual-stage AC filtering and separate mains connections.

The Gryphon XT(eXTended) power supplies incorporate 36 capacitors and 11 voltage regulations for each channel in a 28,000 microFarad capacitor bank for a pure, stable power supply that is larger than in most 60 Watt power amplifiers. Some might call it overkill, but experience has taught us that the design and capacity of the power supply is of critical importance in the performance of an audio component.

In addition to the MC power supply board, the Gryphon power supply unit is also equipped to accept a third board which could power new add-on modules which may become available at a later date.

SPECIFICATIONS

Signal to noise ratio:	90 dB ref. 10 mV, unweighted
Frequency response:	1 Hz - 1 MHz
RIAA tracking	+/-0.15 dB, 20 Hz - 20 kHz (mc version)
Overload:	1 kHz, 300 mV RMS
Input imp. phono mm	47 K Ω
Input imp. line	8 K Ω
Input imp. phono mc	1 - 200 Ω adjustable
Gain mc	30 dB
Gain line	26 dB
Gain mm	32 dB
Output imp.	50 Ω
Output max.	11.5 VRMS
Output voltage swing	33 VPP / 10K Ω
Regulation stages	11 per channel (mc version)
Shipping weight	24 kgs

FRONT PANEL FUNCTIONS

CUSTOM MADE

PRECISION 24-STEP

VOLUME ATTENUATOR

The stepped passive resistor network volume control offers superior sound quality to even the most expensive potentiometers with their inherent tracking and noise problems. The fixed-resistor stepped rotary switch offers pristine sound and improved resolution of fine musical detail.

PROGRAM SELECTOR SWITCH

The input selector has six positions marked 0 (Mute), PH (Phono), CD (Compact Disc), TU (Tuner), TA (Tape) and AU (Aux). The position marked »0« is the mute function which may be used as an alternative to turning the volume control all the way down when changing records or during brief interruptions.

The front panel lights are a »string« of optical fiber, not LED's.

REAR PANEL CONNECTIONS

Interconnect cables should be connected as indicated on the rear panel. The double set of preamp outputs allows easy bi-wiring or bi-amping without the degrading influence of Y-connectors.

MC VERSION ONLY:

The »MC load« sockets on the rear panel accept plug-in modules for optimum loading of your MC cartridge.

To ensure perfect impedance matching for the MC cartridge of your choice, the Gryphon Preamplifier XT offers ideal interfacing for virtually every available MC cartridge. The adaptors included with the preamplifier cover the most used impedance values. The spare adaptor (grey) is empty and allows you to make a special plug to your own specifications. Use the impedance table to find the correct resistor value. This value is normally specified by the cartridge manufacturer and can be supplied by your Gryphon dealer. Use only a high-quality precision metal film resistor. Mount the resistor as indicated and take special care to avoid »cold« solderings.

If in doubt, please let your Gryphon dealer make the plug-in module for you.

Before changing modules, switch the program selector to MUTE.

The effect of different impedances is audible, but should not be used as an »equalizer« but rather to ensure optimum cartridge performance. If soundstage, details and transparency all fall into place, but the tonal balance is »off«, we suggest that the problem lies elsewhere in your system.

S P I K E S

The use of spikes beneath the Gryphon Preamplifier XT allows more efficient isolation from vibration and resonances. Coasters are provided for the protection of furniture.

THE ART OF GROUNDING

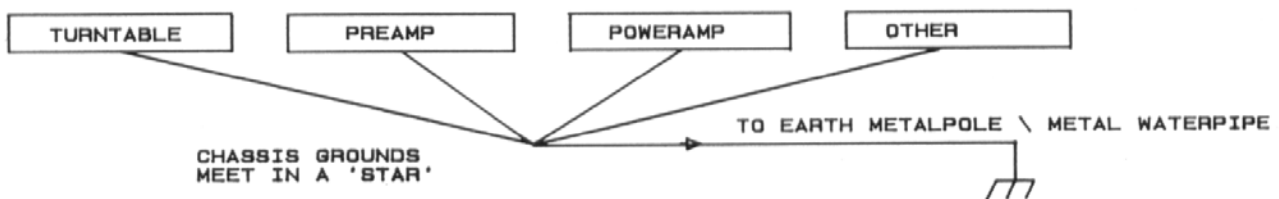
In a normal audio system we recommend the use of both grounding posts (if grounding is required at all). Grounding and the grounding path are high priorities in the Gryphon design philosophy, and we strongly recommend that you experiment with various means of grounding your system.

Correct grounding is not a simple matter of the absence of hum. Grounding has a profound influence on system performance in such essential areas as tonal balance, stereo perspective and dynamics, to name but a few.

Our experiments have demonstrated that »star« grounding is very effective. In a star ground, all chassis are grounded to the same point. This point is then truly grounded (a long metal pipe in the ground or a water pipe). However, the results will vary depending on the audio system, the electrical environment and the purity of the AC supply.

In some cases a water pipe may prove to be a very poor solution. Experiment, it pays off.

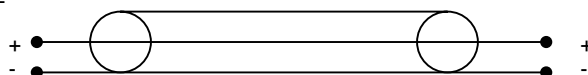
STAR GROUNDING



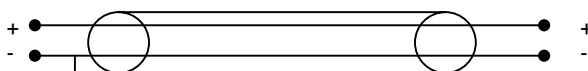
INTERCONNECTIONS

Although you probably already have a favorite cable, the Gryphon Preamplifier XT is so revealing that you may have cause to rethink your opinion on this crucial optimum contact. A bad connection becomes a series resistance, with degrading effect on performance. Use only gold-plated connectors of premium quality.

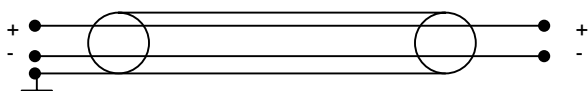
1. COAXIAL



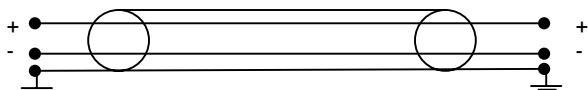
2. SEMI-BALANCED



3. SEMI-BALANCED WITH GROUNDED SHIELD



4. BALANCED



OPTIONAL MM AND MC MODULES

The line level version of the Gryphon Preamplifier XT may be expanded to include the MM and MC modules, should you require these facilities at a later date. The MM version may be expanded to include the MC module.

CARE AND MAINTENANCE

Do not apply any abrasive cleaning agents to the Gryphon Preamplifier XT. The black anodized sections may be cleaned using a moist cloth. Use only a soft cloth to remove dust and fingerprints from the front panel. The wooden knobs are treated with oil and will in time take on an attractive dark hue.

There are no user serviceable parts inside the Gryphon Preamplifier XT.

All components are carefully selected and matched to meet the stringent demands of the sophisticated dual mono design.

For service or advice, please contact your Gryphon dealer or your national Gryphon distributor.

Any attempt by unauthorized personnel to repair or modify the Gryphon Preamplifier XT invalidates the warranty.

GRYPHON MAILING LIST

The warranty on your GRYPHON PREAMPLIFIER XT is effective only if you fill out the enclosed registration card and return it to us or to your national Gryphon distributor. Your comments are greatly appreciated. If you mail the card directly to us, we will send you a small token gift and keep you informed of future product development. Thank you.

If you attend hi-fi exhibitions, please look us up. We always welcome the opportunity to meet the people who live with our products.

WARRANTY

The GRYPHON PREAMPLIFIER XT is warranted against failures arising through faulty workmanship and materials for a period of 5 years from date of purchase. The warranty is not transferable.

All claims under this warranty must be made to the distributor in the buyer's country by returning the unit securely packed in the original box with all accessories, postage prepaid and insured. The unit will be repaired or replaced at no charge for parts and labour.

This warranty remains valid only if the serial number on the unit has not been defaced or removed and if repairs are performed only by authorized GRYPHON dealers or distributors. It does not cover damage due to misuse, accident or neglect. The distributor or the manufacturer, Gryphon Audio Design, Denmark retains the exclusive right to make such judgements on the basis of inspection.

The retailer, distributor or manufacturer of the GRYPHON shall not be liable for consequential damage arising from the use, misuse or failure of this product, including injuries to persons or property.

To qualify, the warranty registration card must be filled out and returned to the manufacturer within 10 days of purchase.

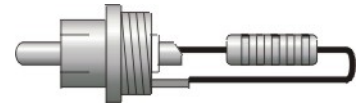
Manufacturing and worldwide distribution:



Gryphon Audio Designs APS, Aarhusvej 53, Stilling, 8660 Skanderborg, Denmark, Phone 45 86 57 07 77, Fax 45 86 57 05 33

IMPEDANCE INTERFACE LOAD CHART

LOAD	E96 RESISTOR	ADAPTOR
2,50	2,55	
2,73	2,74	
2,97	3,01	
3,24	3,32	
3,54	3,57	
3,86	3,92	
4,20	4,32	
4,59	4,64	
5,00	5,11	
5,45	5,62	
5,95	6,19	BLUE
6,48	6,65	
7,07	7,32	
7,71	8,06	
8,41	8,87	
9,17	9,53	
10,00	10,50	GREEN
10,91	11,50	
11,89	12,70	
12,97	14,00	
14,14	15,40	
15,42	16,50	
16,82	18,20	
18,34	20,00	
20,00	22,10	
21,81	24,30	
23,78	26,70	
25,94	30,10	
28,28	33,20	
30,84	36,50	
33,64	40,20	
36,68	45,30	
40,00	49,90	RED
43,62	56,20	
47,57	61,90	
51,87	69,80	
56,57	78,70	
61,69	88,70	
67,27	102,00	
73,36	115,00	
80,00	133,00	
87,24	154,00	
95,14	182,00	YELLOW
103,75	215,00	
113,14	261,00	
123,38	324,00	
134,54	412,00	
146,72	549,00	
160,00	806,00	
174,48	1370,00	
190,27	3920,00	
200,00	infinite	use no adaptor



Spare adaptor for optional load: GREY.
 All values in Ohms. Use 1% E96 or E192 row metal film resistor.

